

Inquiry-based Touring and Open-ended Questions



Inquiry Method of Teaching

WHAT IS INQUIRY?

- **Instruction/Exploration guided by questions (facilitation)**
- **Collective**
- **Dynamic**
- **Employs open-ended questions**

“Inquiry teaching assists visitors to transition into learners by helping them develop and practice learning skills—skills they can use again on return visits and in other contexts.”

-Alan Gartenhaus

Descriptive – Look

What do you see?

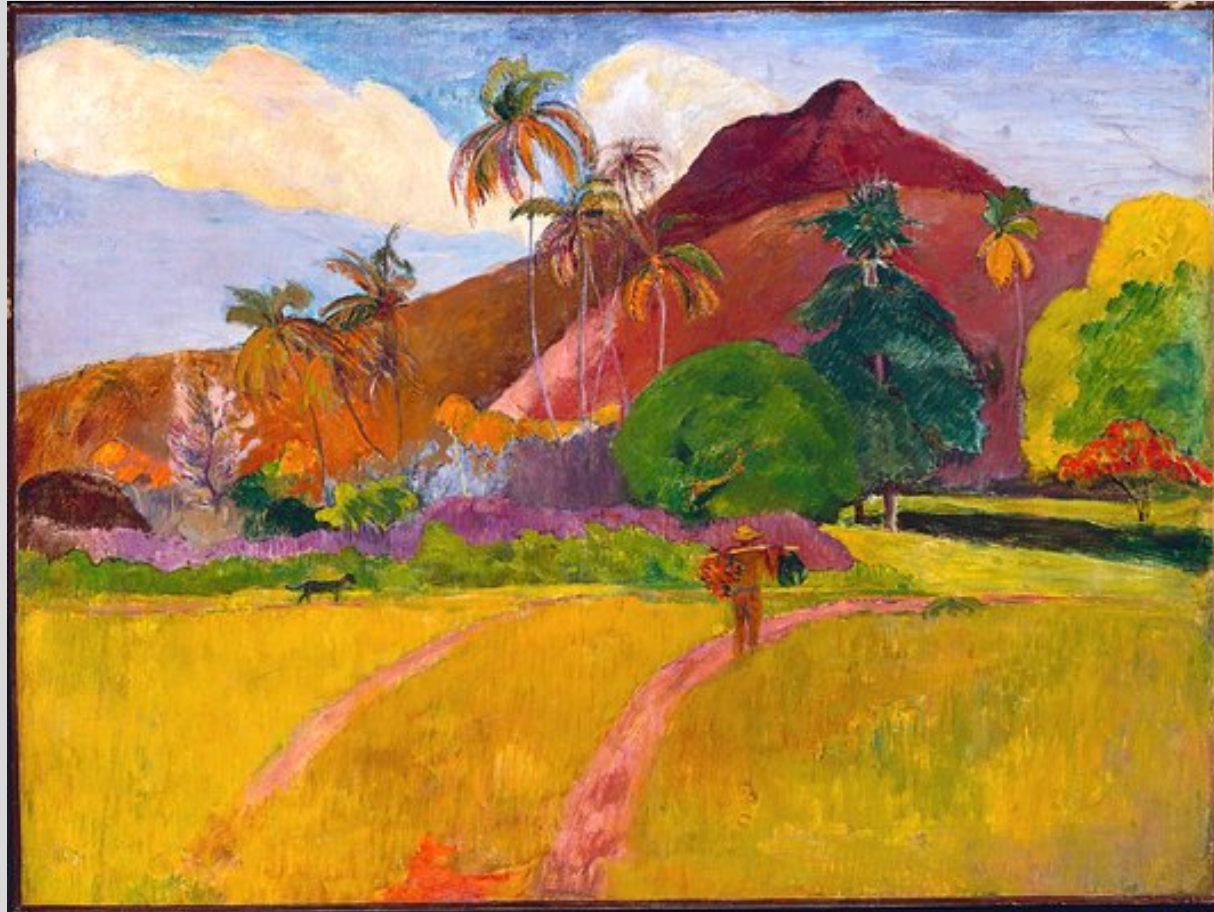
Interpretive – Explore

What do you think...?

Associative – Relate

How does it relate to you and your visitors?

Descriptive –Look, What do you see?



What's going on in this picture?

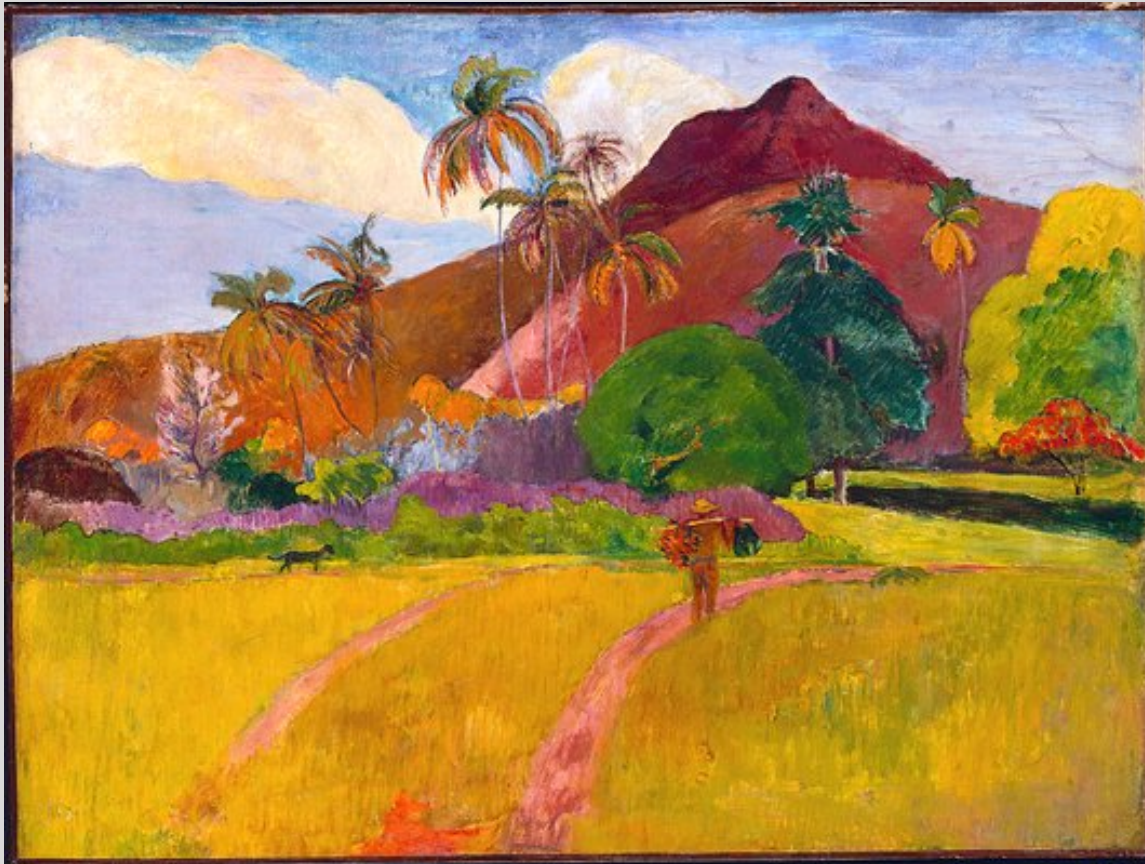
If you were writing a travelogue, how would you describe this place?

How would you describe the climate in Tahiti as depicted by Gauguin?

How would you describe the colors in this painting?

What happen just before. What will happen next?

Interpretive Explore, What do you think...?



What do you see that makes you say that?

Gauguin was interested evoking an emotional response to his surroundings. Based on what you see, what do you think was Gauguin's emotional response to this place?

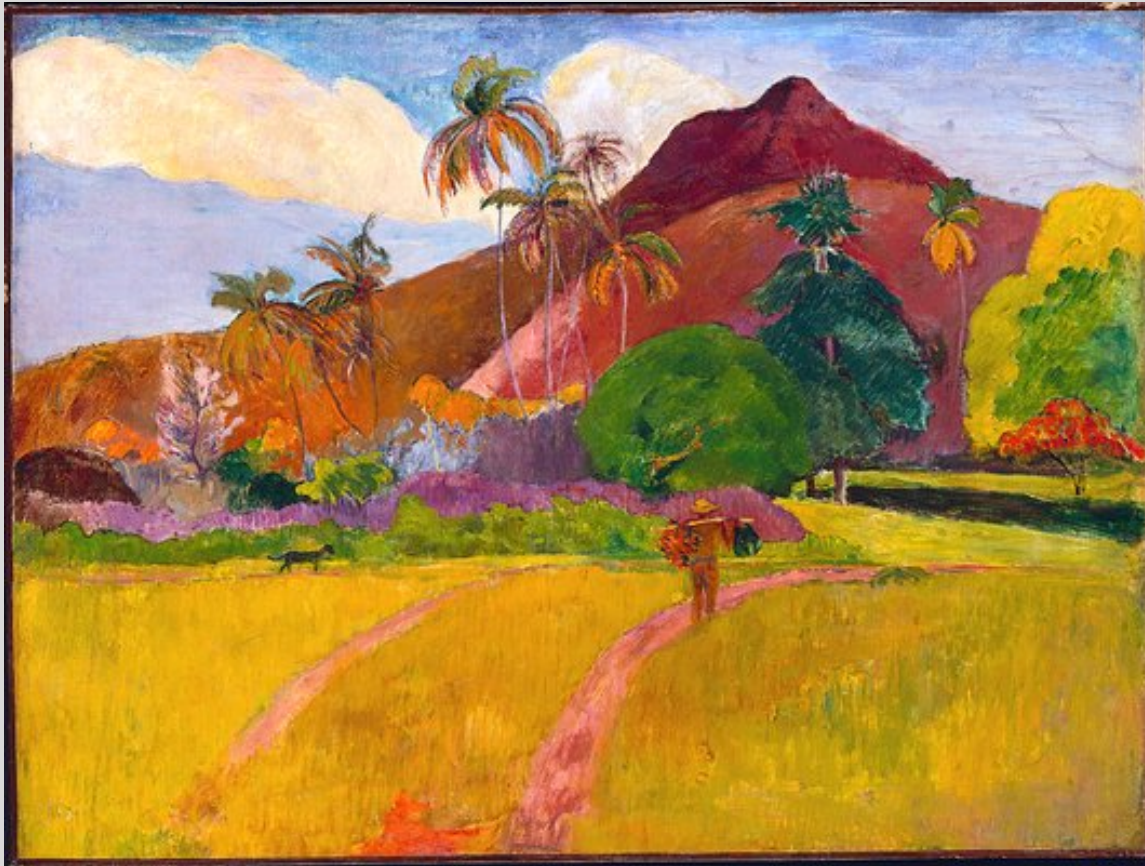
Do you feel that Gauguin portrayed this scene in Tahiti realistically? Why, or why not? WDYS...?

Possibilities

...do you think

How might...

Associative – How does the work of art relate to you and your visitors?



Consider how you think you might have felt seeing this picture if you had been alive in 1891?

For Gauguin traveling to Tahiti was a spiritual journey. If you were to paint a picture of place that you consider special, or spiritual, where would it be? (and why)

If Gauguin were alive today, what medium might he use to capture this scene?

Caution! Avoid...

- asking yes/no questions
- more than once question at a time
- run-on questions
- questions that you can't answer yourself
- questions that you don't really care if you know the answer to



Questions should *not* be asked when vital information is to be transferred, when vocabulary or definitions of terms are being taught, or when multiple perspectives are not useful.



